

Title:

**The Practical Application of
Responsible Care for:**

- Warehousing Operations**
- Tank Cleaning Operations**

Subtitle:

Simplicity and Logic in the Ways and Means ECTA provide to implement Responsible Care

Objective



Section 1

Starting Parameters

Locationwise

Some statements to start with:

- ▶ Transport operations– by definition – by nature are changing locations

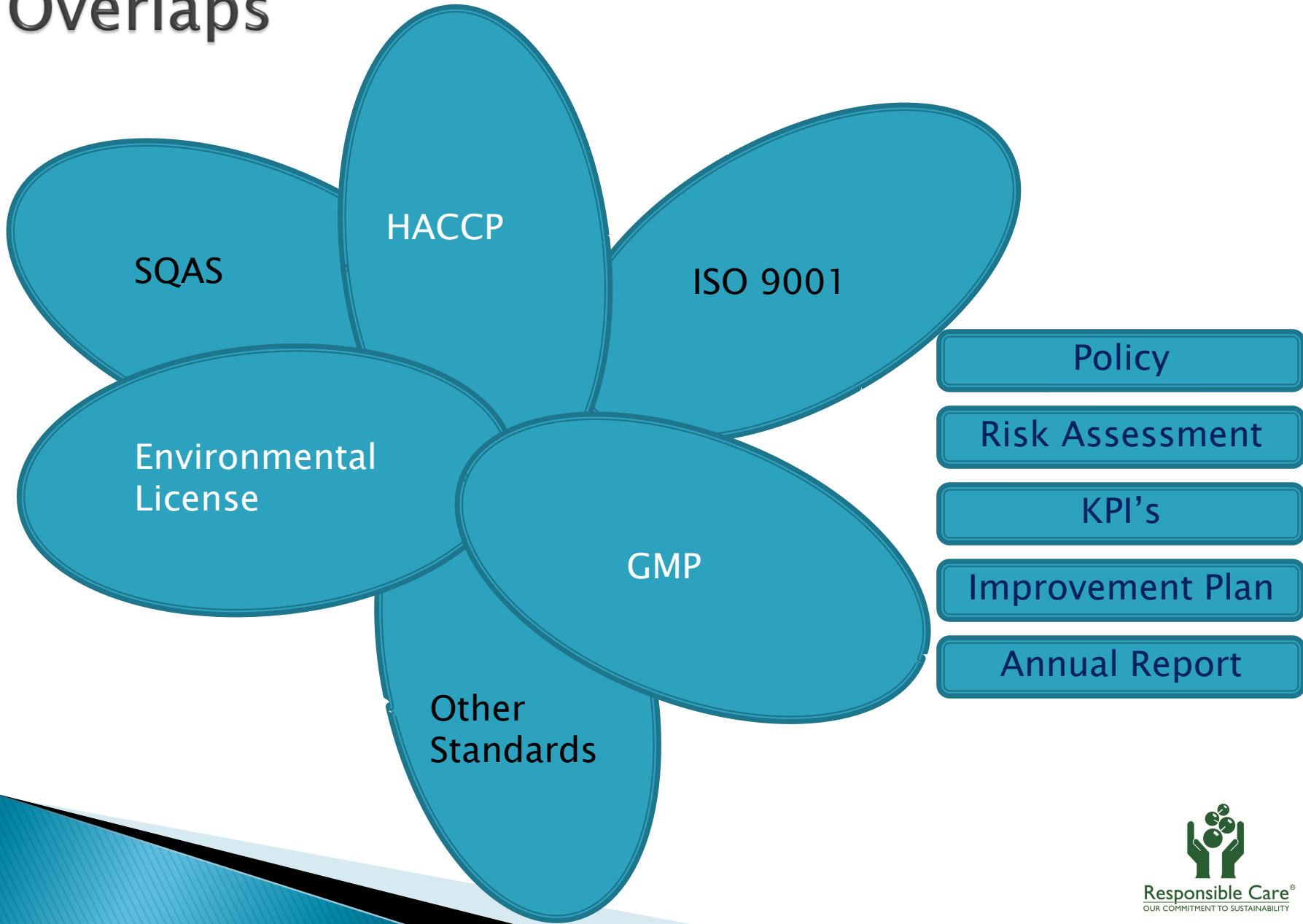


- ▶ Warehousing and Tank Cleaning operations have site–depending natures



Consequences?

Overlaps



KPI's Tank Cleaning

Selection of TC Specific KPI's

Number of Cleans per year

Residue drained from tank (per annum)

Water used for cleaning (m^3 per annum)

Waste disposal of: Residue / Run off waste / water

Amount back to :

Re-use / Back to authorities after PH/Alkalinity check

Reduction 2009-2010-2011

Water (m^3) Electricity use (kWh) Gas use (kWh)

KPI's Warehousing

Selection of WH Specific KPI's

Number of Moves per year (In / Out / Total)

Tonnes per year (In / Out / Total)

Number of incidents for this year – handling equipm.
(Injury / Loss of Product)

Split of handling equipment used for chemical
movements:

Electrical lift Trucks / LPG lift trucks / Diesel lift trucks

Section 2

Responsible Care Tools as provided/suggested by ECTA



Responsible Care[®]
OUR COMMITMENT TO SUSTAINABILITY

1. Commitment Document
2. Agreement ECTA – ECTA member
3. Appointed RC Coordinator
4. Annual Improvement Plan
5. Annual Improvement Realization Report
6. Annual KPI report



COMMITMENT

I hereby declare my support to the ECTA Responsible Care Core Principles to:

1. Continuously improve the environmental, health and safety performance of our logistics and associated activities directly involved with chemical Industry so as to avoid harm to people and the environment.
2. Ensure that proper care is taken to protect the safety and health of all people involved in our logistics and associated activities.
3. Minimize the environmental impact of our logistics and associated activities.
4. Use resources and fuel efficiently and minimize waste.
5. Take adequate measures to ensure the security of our operations.
6. Collect data and report openly on our performance, achievements and shortcomings.
7. Listen, engage and work with people to understand and address their concerns and expectations.
8. Cooperate with governments, international institutions, organizations and authorities in the development and implementation of effective regulations and standards to improve safety.
9. Encourage the responsible management of all those who are involved in providing a service to us, e.g. transport, subcontractor's, warehousing and cleaning stations.

And I fully commit to the ECTA Responsible Care Program to:

- Continuously improve the environmental, health and safety performance of my company;
- advance sustainable development;
- champion and facilitate the appropriate extension of Responsible Care across the business value chain;
- address stakeholder expectations in the continuing development of Responsible Care.

Date
Signature

Name
Title
Company



Practical Step 1

Policy

- Add the term RC to your policy
- Check your policy against the 9 RC components of the RC commitment document you signed
- Communicate your new policy

Practical Step 2

Risk Assessment

- Include RC as part of your motivation in your Risk Assessment procedures and documents
- Identify the RC Components (1 to 9) linked to the actions resulting from your Risk Assessment
- Include the actions resulting from your Risk Assessment in your RC Annual Improvement Plan

Practical Step 3

KPI's

- Include the pre-defined KPI's from the ECTA RC KPI form in your own KPI registration and reporting system
- Complete your annual RC KPI report, using the outcome of this reporting system

Please note:

If you partly use best estimates, please register your estimating approach. Next year you should use the same approach.

Practical Step 4

Improvement Plan

- Consider to include items from the following sources:
 - > the RC selected SQAS questions
 - > items highlighted during internal audits
 - > new requirements in your environmental permits
 - > additional requirements from government agencies
 - > ECTA's extensive list of examples
 - > last year's completed KPI form, etc., etc.
- Link the improvement items to their respective RC Components

Practical Step 5

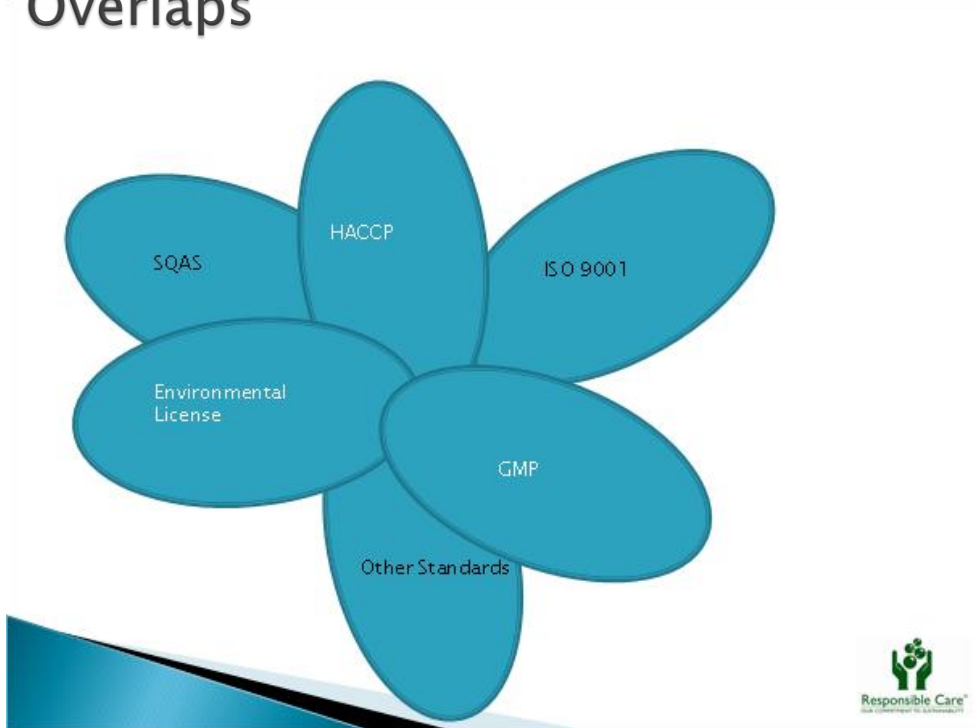
Annual Report

(Improvement
Realization)

- Consider to use your Annual RC Improvement Plan as the starting point
- Add a column for comments and conclusions per item to show progress, completion results and/or the need to include the item again in next year's Improvement Plan

Practical Step 6

Overlaps



Policy

Risk Assessment

KPI's

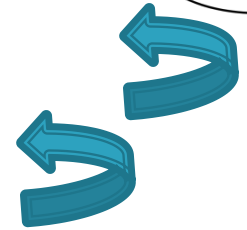
Improvement Plan

Annual Report

MAKE SURE THAT YOU INTEGRATE AS MUCH AS POSSIBLE TO AVOID DOUBLE WORK



- decide to improve
- see chance vs consequence
- see the risk



The Risk Matrix

Likelihood	Consequences				
	Insigni- ficant	Minor	Moderate	Major	Severe
Almost certain	MEDIUM	HIGH	HIGH	EXTREME	EXTREME
Likely	MEDIUM	MEDIUM	HIGH	HIGH	EXTREME
Possible	LOW	MEDIUM	MEDIUM	HIGH	EXTREME
Unlikely	LOW	MEDIUM	MEDIUM	MEDIUM	HIGH
Rare	LOW	LOW	MEDIUM	MEDIUM	HIGH

The choices for improvement projects

Make simple choices based on the following components – a mixture:

- ▶ Is there a great chance that our continuity is threatened?
- ▶ Are there positive financial aspects for the company (first level and second level)?
- ▶ Are we able to sleep at night?
- ▶ Is it easy to get your personnel motivated?
- ▶ Is it in the red area of the risk matrix?

Remember: – keep it simple and keep it short
– you cannot do everything in 1 year
– all participants (e.g. employees) must understand

Thank you for your attention

